

ROTATING RIGHT

BEAR RECIPROCATING PUMPS



BEAR

Manufacturers of Fluid Movement Products

Bear Equipment has been in the business of manufacturing quality Pumps, fluid movement and pressure control equipment and replacement parts for over 20 years.

Our Pump line includes: Duplex, Triplex and Quintuplex Reciprocating Pumps to 1000 Hp manufactured of various alloys to fit a broad range of fluid requirements.

BEAR Pneumatic drive Pumps produce flows from 0.5 GPM to 6.0 GPM and pressures to 30,000 psi.

Our Pressure Control Products include:
R 10K Pressure Regulators for pressures to 10,000 psi

BEAR PD Series Bladder Type Pulsation Dampeners are used on pumps up to 1,000 Hp

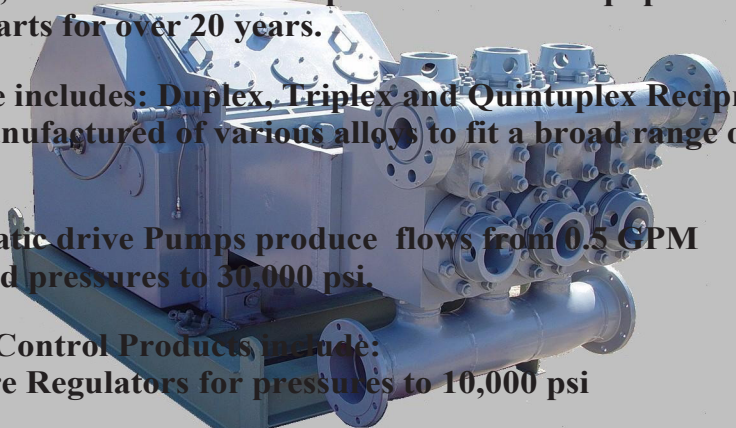
FV Model Relief Valves and Flow Regulators offer pressure regulation with the benefit of dramatic pulsation reduction in discharge flow lines.

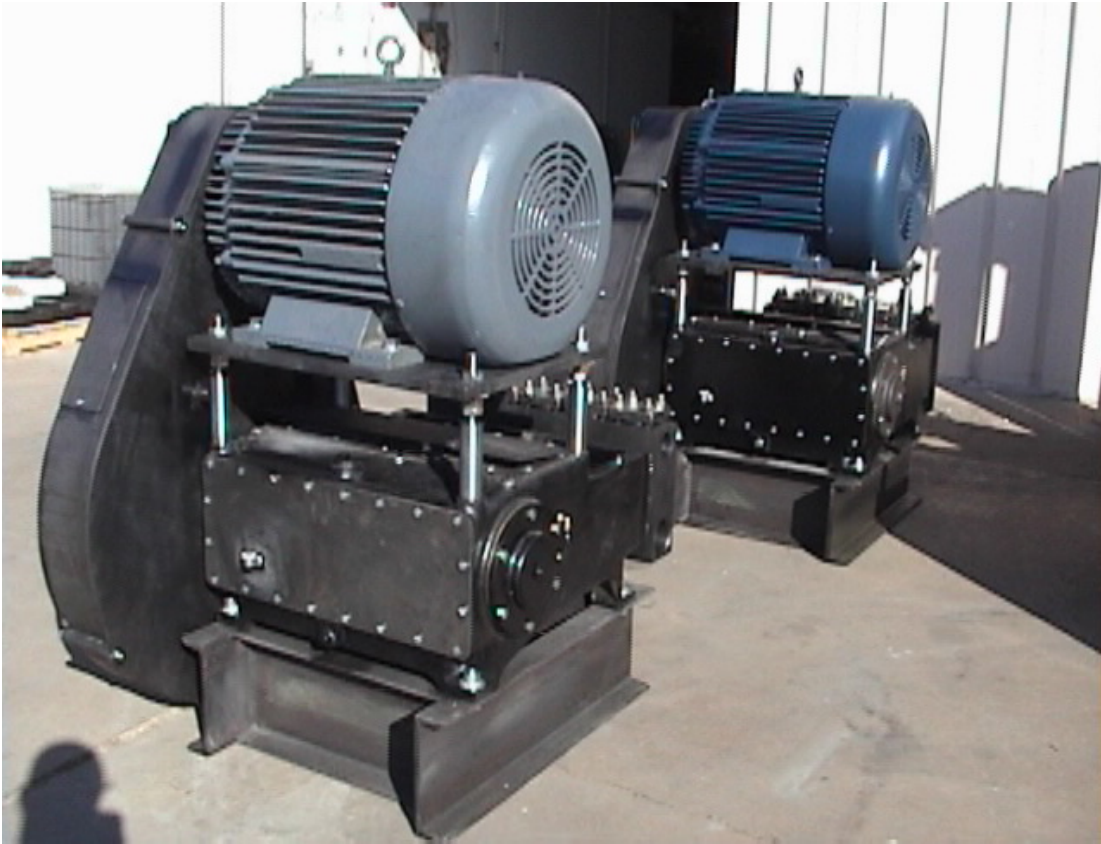
We offer packaging and design assistance for our OEM customers. CAD unit and package drawings available.

Typical Applications:

Hydraulic Power Units
Water Purification
High Pressure Product Sampling
Methanol Injection
Gas Treatment (Amine , Glycol)
Reverse Osmosis Water Treatment
Sewer Cleaner

Chemical Injection
Hydro Test Units
Hydraulic System Stabilization
Trenchless Technology
Oil & Gas Secondary Recovery
Blow Out Preventer Controls





Bear Reciprocating Pump Models

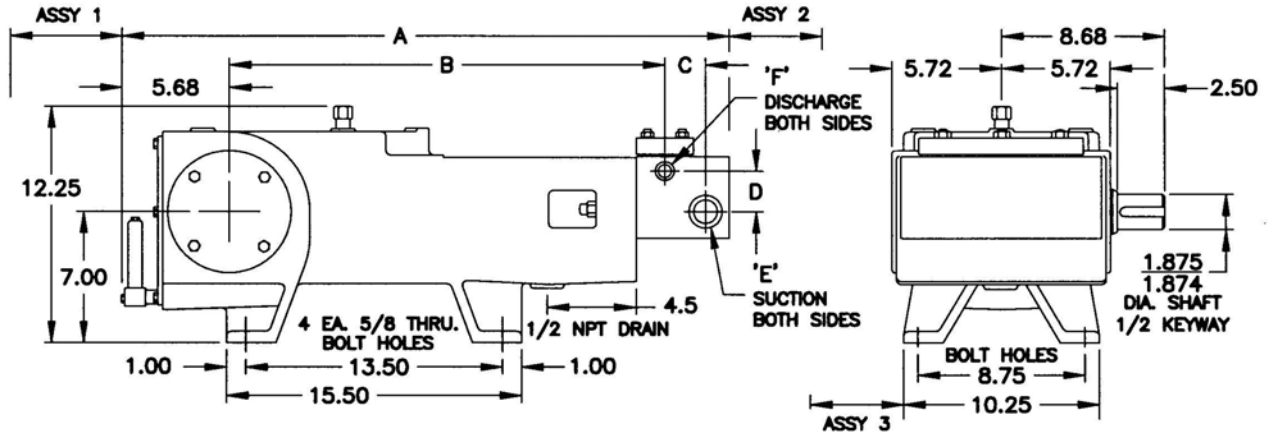
Performance Specifications

CX-5
BX-10
BD-28
BD-30
BD-60
BQ-100
BD-130
BD-165
BGR 1000

Duplex Pump
Triplex Pump
Triplex Pump
Triplex Pump
Triplex Pump
Quintuplex Pump
Triplex Pump
Triplex Pump
Triplex Pump

CX-5 DUPLEX PUMP DATA

2-1/4" STROKE, 2000 LB. ROD LOAD



PUMP DIMENSIONS

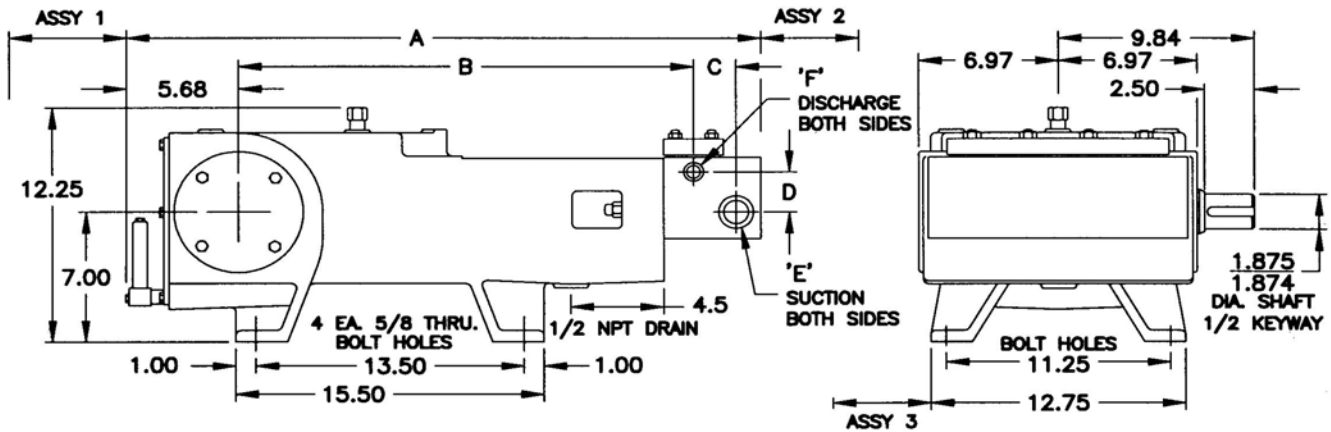
CYL. SIZE	A	B	C	D	E	F	WT (lbs)	ASS'Y		
								#1	#2	#3
1	32-3/4	22-5/8	2-1/8	2-5/32	1-1/2 npt	3/4 npt	299	9-3/4	3	16-1/2
1-1/2	33-3/4	22-7/8	2-23/32	2-13/16	2 npt	1-1/4 npt	335	9-3/4	3	16-1/2
2	35-3/8	23-17/32	3-13/32	3-9/16	2-1/2 npt	1-1/2 npt	346	9-3/4	3	16-1/2

PUMP PERFORMANCE CHART

CYL. SIZE	PLUNGER DIAMETER	MAX. PRESS. PSI	GALS. PER REV	GPM DISPLACEMENT				
				200 RPM	300 RPM	400 RPM	500 RPM	600 RPM
1	1/2	10000	.0038	0.76	1.14	1.52	1.90	2.28
	5/8	6700	.0059	1.18	1.77	2.36	2.95	3.54
	3/4	4700	.0086	1.72	2.58	3.44	4.30	5.16
	7/8	3460	.0117	2.34	3.51	4.68	5.85	7.02
	1	2650	.0153	3.06	4.59	6.12	7.65	9.18
1-1/2	1-1/8	2090	.0193	3.86	5.79	7.72	9.65	11.58
	1-1/4	1695	.0239	4.78	7.17	9.56	11.95	14.34
	1-3/8	1400	.0289	5.78	8.67	11.56	14.45	17.34
	1-1/2	1177	.0344	6.88	10.32	13.76	17.20	20.64
	1-5/8	1003	.0404	8.08	12.12	16.16	20.20	24.24
2	1-3/4	865	.0468	9.36	14.04	18.72	23.40	28.08
	1-7/8	753	.0537	10.74	16.11	21.48	26.85	32.22
	2	662	.0612	12.24	18.36	24.48	30.60	36.72

BX-10 TRIPLEX PUMP DATA

2-1/4" STROKE, 2000 LB. ROD LOAD



PUMP DIMENSIONS

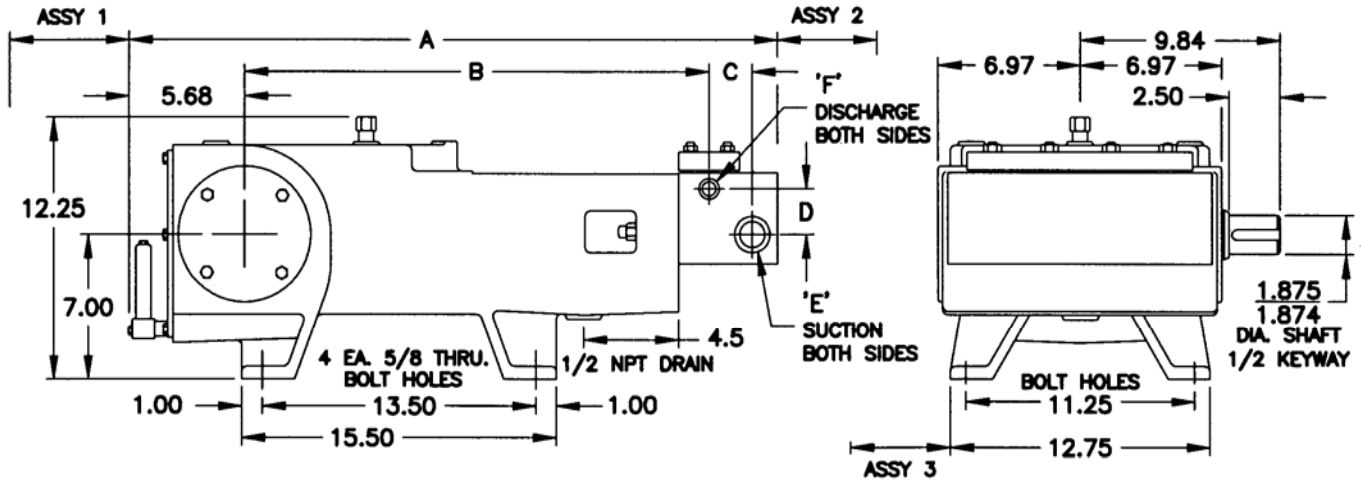
CYL. SIZE	A	B	C	D	E	F	WT (lbs)	ASS'Y		
								#1	#2	#3
1	32-3/4	22-5/8	2-1/8	2-5/32	1-1/2 npt	3/4 npt	366	9-3/4	3	16-1/2
1-1/2	33-3/4	22-7/8	2-23/32	2-13/16	2 npt	1-1/4 npt	403	9-3/4	3	16-1/2
2	35-3/8	23-17/32	3-13/32	3-9/16	2-1/2 npt	1-1/2 npt	415	9-3/4	3	16-1/2

PUMP PERFORMANCE CHART

CYL. SIZE	PLUNGER DIAMETER	MAX. PRESS. PSI	GALS. PER REV	GPM DISPLACEMENT				
				200 RPM	300 RPM	400 RPM	500 RPM	600 RPM
1	1/2	10000	.0057	1.14	1.71	2.28	2.85	3.42
	5/8	6700	.0089	1.78	2.67	3.56	4.45	5.34
	3/4	4700	.0129	2.58	3.87	5.16	6.45	7.74
	7/8	3460	.0176	3.52	5.28	7.04	8.80	10.56
	1	2650	.0230	4.60	6.90	9.20	11.50	13.80
1-1/2	1-1/8	2090	.0290	5.80	8.70	11.60	14.50	17.40
	1-1/4	1695	.0350	7.18	10.77	14.36	17.95	21.54
	1-3/8	1400	.0434	8.68	13.02	17.36	21.70	26.04
	1-1/2	1177	.0516	10.32	15.48	20.64	25.80	30.96
	1-5/8	1003	.0606	12.12	18.18	24.24	30.30	36.36
2	1-3/4	865	.0703	14.06	21.09	28.12	35.15	42.18
	1-7/8	753	.0806	16.12	24.18	32.24	40.30	48.36
	2	662	.0918	18.36	27.54	36.72	45.90	55.08

BD-28 TRIPLEX PUMP DATA

2-1/4" STROKE, 3000 LB. ROD LOAD



PUMP DIMENSIONS

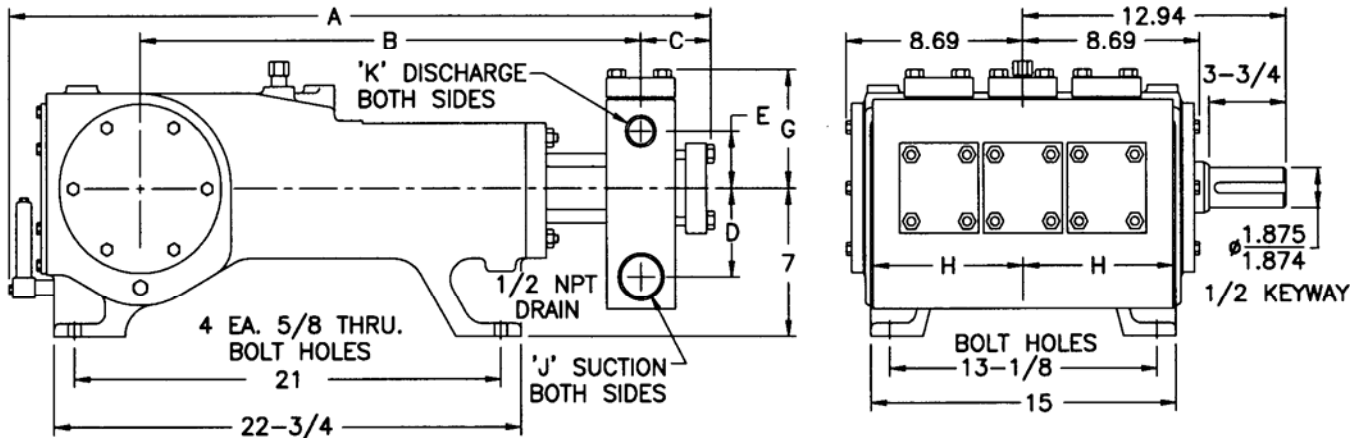
CYL. SIZE	A	B	C	D	E	F	WT (lbs)	ASS'Y		
								#1	#2	#3
1	32-3/4	22-5/8	2-1/8	2-5/32	1-1/2 npt	3/4 npt	372	9-3/4	3	16-1/2
1-1/2	33-3/4	22-7/8	2-23/32	2-13/16	2 npt	1-1/4 npt	409	9-3/4	3	16-1/2
2	35-3/8	23-17/32	3-13/32	3-9/16	2-1/2 npt	1-1/2 npt	421	9-3/4	3	16-1/2

PUMP PERFORMANCE CHART

CYL. SIZE	PLUNGER DIAMETER	MAX. PRESS. PSI	GALS. PER REV	GPM DISPLACEMENT				
				200 RPM	300 RPM	400 RPM	500 RPM	600 RPM
1	1/2	10000	.0057	1.14	1.71	2.28	2.85	3.42
	5/8	9775	.0089	1.78	2.67	3.56	4.45	5.34
	3/4	6790	.0129	2.58	3.87	5.16	6.45	7.74
	7/8	4990	.0176	3.52	5.28	7.04	8.80	10.56
	1	3820	.0230	4.60	6.90	9.20	11.50	13.80
1-1/2	1-1/8	3015	.0290	5.80	8.70	11.60	14.50	17.40
	1-1/4	2445	.0350	7.18	10.77	14.36	17.95	21.54
	1-3/8	2020	.0434	8.68	13.02	17.36	21.70	26.04
	1-1/2	1698	.0516	10.32	15.48	20.64	25.80	30.96
	1-5/8	1447	.0606	12.12	18.18	24.24	30.30	36.36
2	1-3/4	1247	.0703	14.06	21.09	28.12	35.15	42.18
	1-7/8	1086	.0806	16.12	24.18	32.24	40.30	48.36
	2	955	.0918	18.36	27.54	36.72	45.90	55.08

BD-30 TRIPLEX PUMP DATA

2-3/4" STROKE, 2825 LB. ROD LOAD



PUMP DIMENSIONS

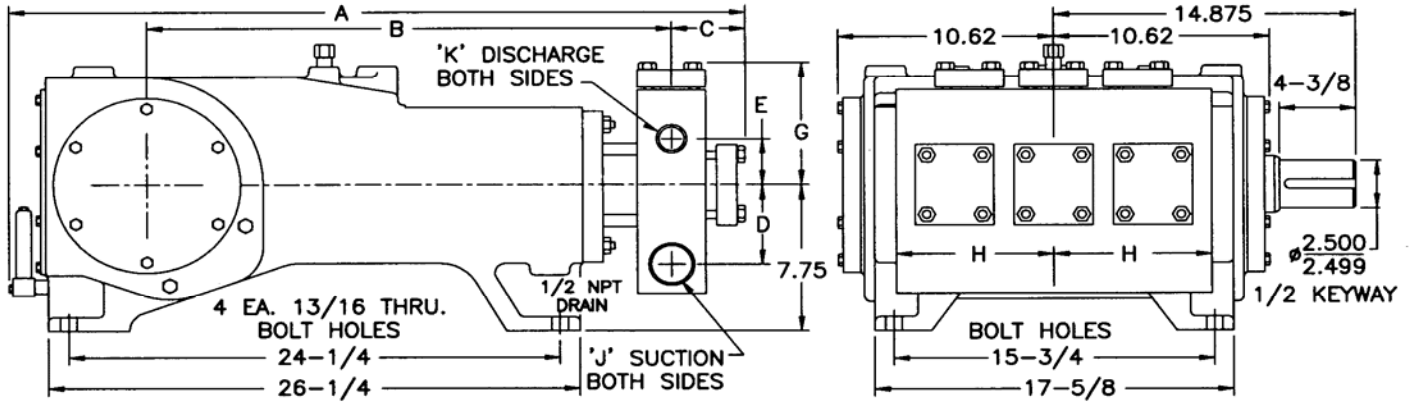
CYL. SIZE	A	B	C	D	E	G	H	J NPT	K NPT	WT (lbs)
1-1/2	35-3/4	24-11/16	3-5/8	4-3/16	2-11/16	5-5/8	6-5/8	2	1-1/4	575
2-1/4	36	25-1/16	3-5/8	4-15/16	3-1/2	6-3/4	8	3	2	632

PUMP PERFORMANCE CHART

CYL. SIZE	PLUNGER DIAMETER	MAX. PRESS. PSI	GALS. PER REV	GPM DISPLACEMENT				
				100 RPM	200 RPM	300 RPM	400 RPM	500 RPM
1-1/2	1	3595	.0281	2.81	5.62	8.43	11.24	14.05
	1-1/8	2840	.0355	3.55	7.10	10.65	14.20	17.75
	1-1/4	2300	.0438	4.38	8.76	13.14	17.52	21.90
	1-3/8	1900	.0530	5.30	10.60	15.90	21.20	26.50
	1-1/2	1600	.0631	6.31	12.62	18.93	25.24	31.55
2-1/4	1-5/8	1360	.0741	7.41	14.82	22.23	29.64	37.05
	1-3/4	1170	.0859	8.59	17.18	25.77	34.36	42.95
	1-7/8	1020	.0986	9.86	19.72	29.58	39.44	49.30
	2	900	.1122	11.22	22.44	33.66	44.88	56.10
	2-1/8	795	.1267	12.67	25.34	38.01	50.68	63.35
	2-1/4	710	.1420	14.20	28.40	42.60	56.80	71.00

BD-60 TRIPLEX PUMP DATA

3" STROKE, 5425 LB. ROD LOAD



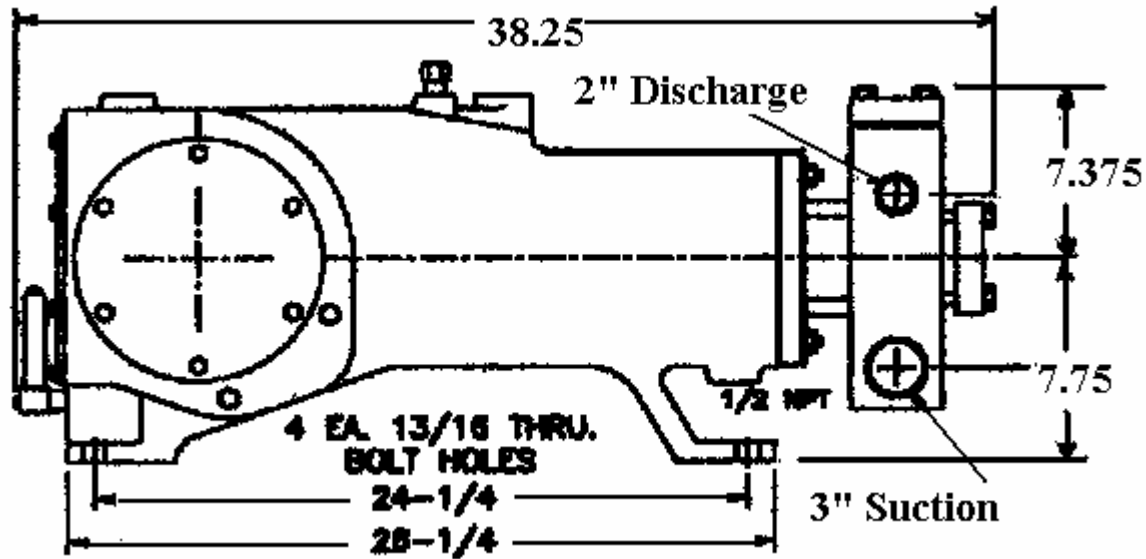
PUMP DIMENSIONS

CYL. SIZE	A	B	C	D	E	G	H	J NPT	K NPT	WT (lbs)
7/8	39-11/16	28-13/16	5-1/4	3-3/4	2-9/16	7-1/16	7-3/4	1-1/2	1	768
1-1/8	38-1/2	27-15/16	4-13/16	4-3/16	2-7/16	6-1/2	7-3/4	2	1-1/4	782
1-3/4	38-1/4	27-15/16	4-9/16	4-7/8	3-3/16	6-7/8	8-1/16	2-1/2	1-1/2	800
2-1/2	38-1/4	28-5/16	4-5/16	5-7/16	3-3/8	7-3/8	8-3/8	3	2	834

PUMP PERFORMANCE CHART

CYL. SIZE	PLUNGER DIAMETER	MAX. PRESS. PSI	GALS. PER REV	GPM DISPLACEMENT				
				100 RPM	200 RPM	300 RPM	400 RPM	500 RPM
7/8	3/4	10,000	.0172	1.72	3.44	5.16	6.88	8.60
	7/8	9,000	.0234	2.34	4.68	7.02	9.36	11.70
1-1/8	1	6,900	.0306	3.06	6.12	9.18	12.24	15.30
	1-1/8	5,450	.0387	3.87	7.74	11.61	15.48	17.35
1-3/4	1-1/4	4,400	.0476	4.76	9.52	14.28	19.04	23.80
	1-3/8	3,650	.0579	5.79	11.58	17.37	23.16	28.95
	1-1/2	3,000	.0689	6.89	13.78	20.67	27.56	34.45
	1-5/8	2,600	.0808	8.08	16.16	24.24	32.32	40.40
2-1/2	1-3/4	2,250	.0937	9.37	18.74	28.11	37.48	46.85
	1-7/8	1,960	.1076	10.76	21.52	32.28	43.04	53.80
	2	1,725	.1224	12.24	24.58	36.72	48.76	61.20
	2-1/8	1,525	.1382	13.82	27.64	41.46	55.28	69.10
	2-1/4	1,360	.1549	15.49	30.98	46.47	61.96	77.45
2-1/2	2-3/8	1,220	.1726	17.26	34.52	51.78	69.04	86.30
	2-1/2	1,100	.1913	19.13	38.26	57.39	76.52	95.65

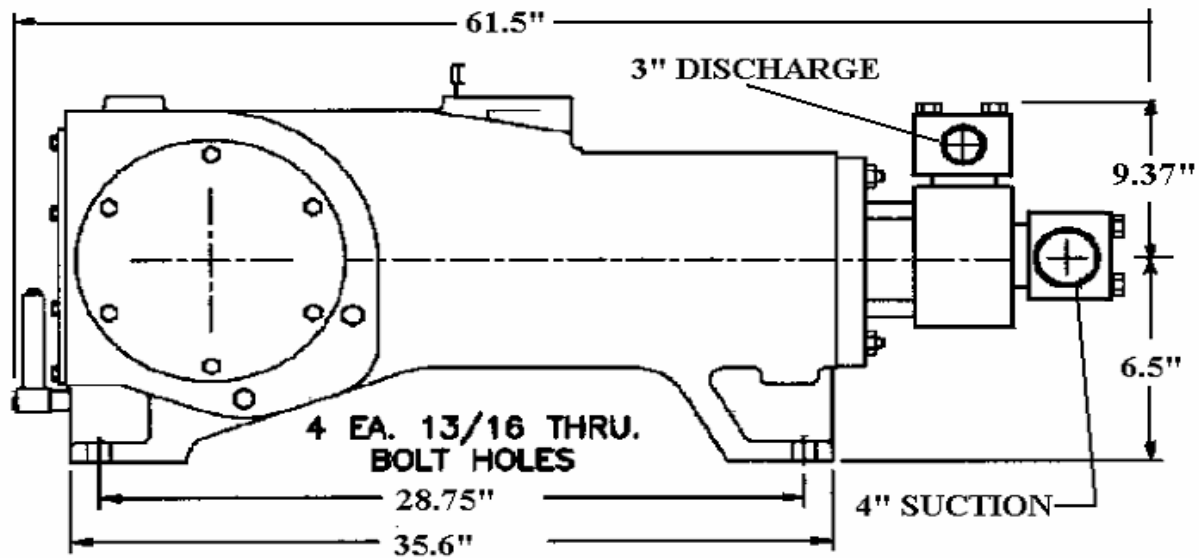
BEAR Model BQ 100



BEAR Model BQ 100 QUINTUPLEX Pump

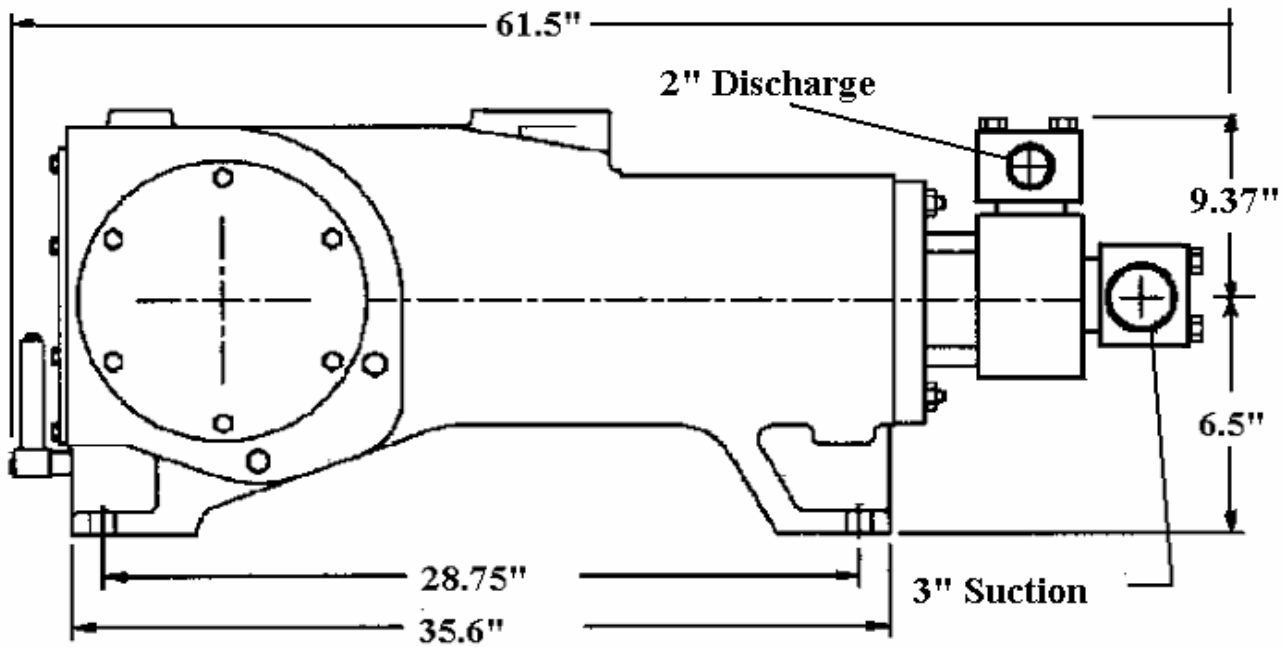
Performance Specifications

Max Pressure (psi)	Plunger Diameter (In)	RPM					
		100	200	300	400	500	550
4500	1.25	7.93	15.87	23.80	31.73	39.67	43.63
3000	1.5	11.50	23.00	34.50	46.00	57.50	63.25
2250	1.75	15.60	31.20	46.80	62.40	78.00	85.80
2025	2.0	20.40	40.80	61.40	81.60	102.00	112.20
1500	2.25	25.80	51.60	77.40	103.20	129.00	141.90
1250	2.5	31.90	63.80	94.70	127.60	159.50	175.45



BEAR MODEL BD-130 Performance

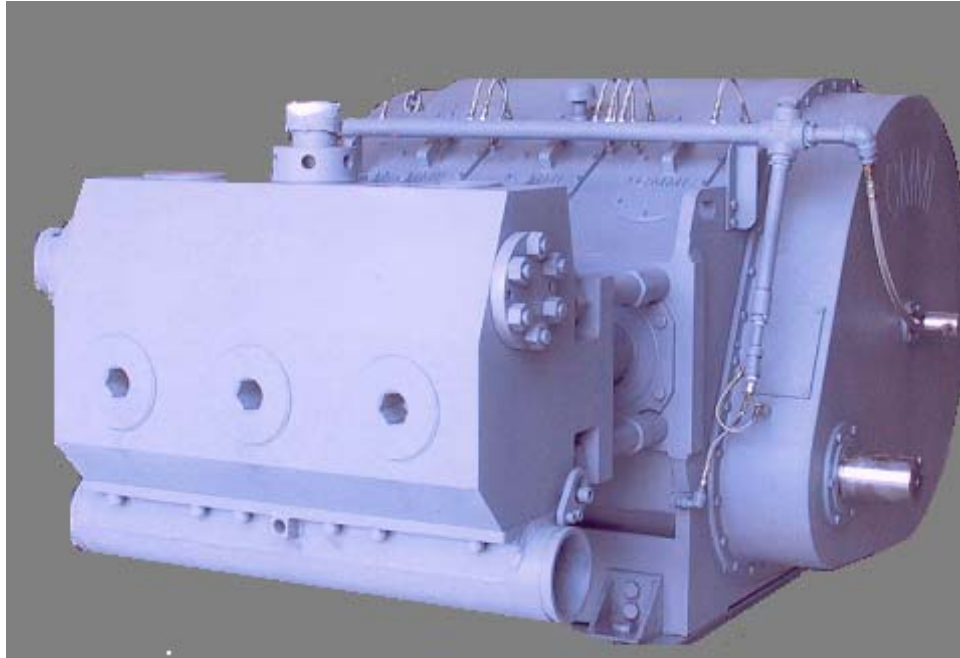
Max	Plunger	RPM					
Pressure	Diameter	Flow Rate					
(psi)	(In)	100	150	200	250	300	350
3000	2.0"	17	26	34	43	51	60
2000	2.5"	27	41	55	68	82	95
1220	3.0"	38	57	76	95	114	133
1050	3.5"	46	69	92	115	138	161
800	4.0"	70	105	140	205	210	245
650	4.5"	88	132	176	258	264	300



BEAR MODEL BD-165 L Performance

Max Pressure (psi)	Piston Diameter (In)	RPM					
		Flowrate (GPM)					
		100	150	200	250	300	350
3000	2.0"	20	30	40	51	62	75
2750	2.125"	23	35	46	58	69	81
2500	2.25"	26	39	52	65	77	90
2000	2.5"	32	39	64	80	96	112
1220	3.0"	46	69	92	115	138	189
1050	3.5"	63	94	125	157	188	219
800	4.0"	82	123	164	205	246	287

BEAR Model BX 1000 Continuous Duty Pump



Compact, Lightweight Design
Highest Rod Load in class (160,000 lbs.)
Piston Sizes up to 7 In.
Front Replaceable Liners
Large API Class 7 Valves
Reduced NPSH Fluid End design
Proprietary Power End Lubrication
Monoblock and Independent Cylinders
Dual Balanced Pinion Drive

Unit Weight 13,500 lbs
Overall Length 88.75 in.
Width 63.375 in.
Height 45.25 in.
Max Pressure 7,500 psi.

Accessories

Rotating Right offers a full line of accessories to ensure long trouble free and safe operation of your multiplex pumps.

Accessories Include:

- Pulsation Dampeners - Suction & Discharge
- Vibration Shock Switches
- Liquid Level Gauges & Switches
- Pressure Safety Valves
- Plunger Lubricators
- Fire Safety Valves
- High Discharge Pressure Switch
- Condensate Drain
- N.A.C.E. Valving
- Lubricator Level Controller
- API Valves
- Drive Options



Expendables



With our worldwide buying power Rotating Right is well equipped to provide a wide range of replacement parts & expendables for virtually all multiplex plunger pumps regardless of make or model.

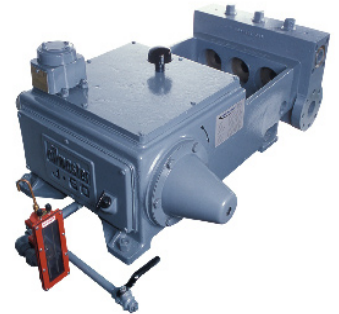


Our expendables inventory includes plungers, packing, brass, valves, bearings, crankshafts, connecting rods and seals.



Repair & Overhauls

Rotating Right service technicians follow strict quality control procedures for every pump repair and overhaul. The use of consistent and reliable re-manufacturing techniques ensure your equipment is returned to you in "Like New" condition.



Head Office:
6120 Davies Road
Edmonton, AB
T6E 4M9

Phone: (780) 485-2010 • Toll Free: (866) 707-7867
Fax: (780) 485-1938
• Calgary • Drayton Valley • Lethbridge
www.rotatingright.com