

ROTATING RIGHT

MODEL 200T-5 SINGLE ACTING TRIPLEX PUMP



200T-5

A 200 horsepower 5" stroke horizontal triplex single acting plunger pump. Available in nickel-aluminum-bronze fluid end material at pump speeds up to 400 RPM and multiple accessory gear reduction unit ratios.

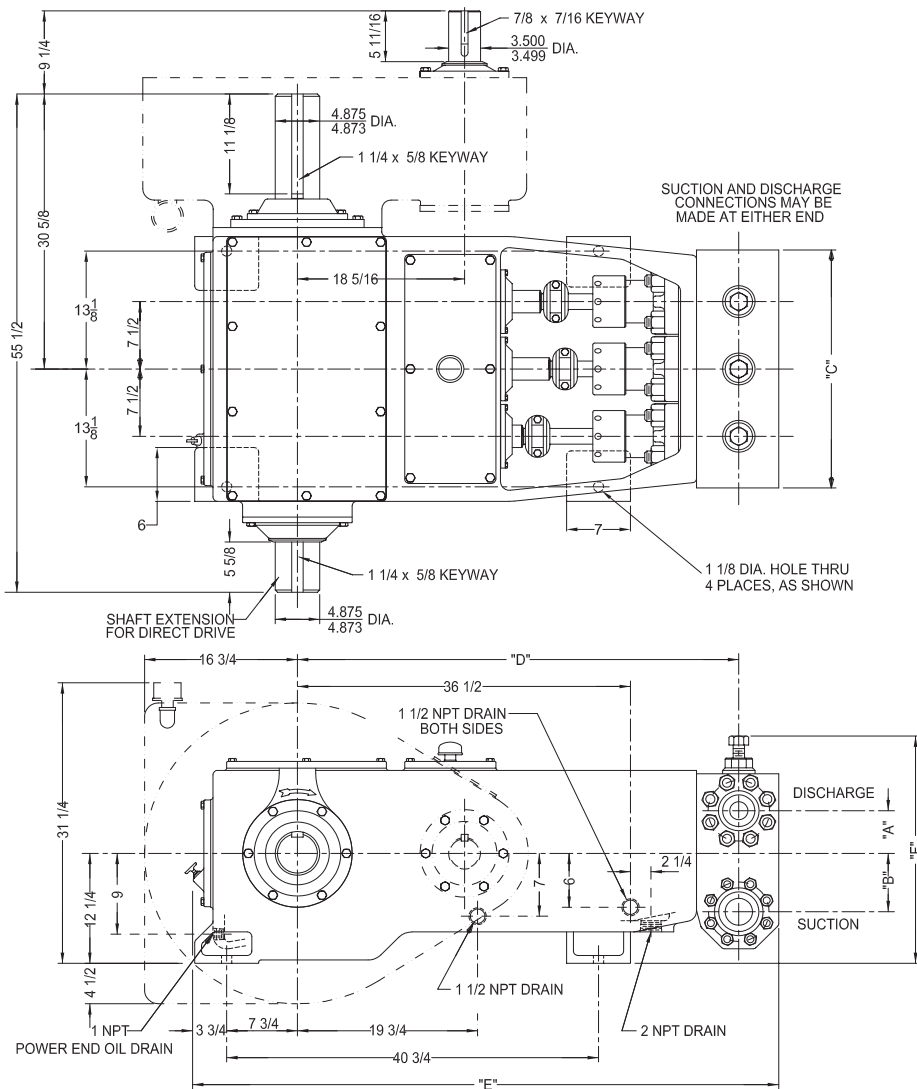
Power End Features:

- Heat Treated Ductile Iron Power Frame
- Bronze bearing crosshead pin bushings
- Cast iron crossheads with upper/lower oil grooves
- Replaceable Stainless Steel intermediate rods
- Flooded sump, splash distribution lubrication
- Alloy steel crankshaft with ground journals and polished throws
- Heavy-duty, tapered roller crankshaft bearings
- Precision type, aluminum alloy crankpin bearings
- Ductile Iron connecting rods
- Alloy steel crosshead pins
- Optional Clamp Type or Threaded Intermediate Rods
- Rated rod load is 11870 lbs.

Fluid End Features:

- Threaded Valve Covers
- 17-4 Stainless Steel or Nickel Aluminum Bronze Steel stuffing boxes (Includes nuts)
- General Service, Molded Lip or Aramid Fiber plunger packing
- Plungers-Solid Ceramic or Tungsten Carbide coated
- Spherical Suction and Discharge Valves
- Valve Seat & Valve Body: Nitronic 50
- Spring: Inconel
- Cage: 316L Stainless Steel
- Severe duty valves with inserts available

200T-5 Triplex Plunger Pump



Specifications

Pump Size

maximum plunger size x stroke length in.(mm):
4 x 5 (102 x 127)

Rated bhp at 400 rpm (kw): 200 (149.1)

Rated plunger load, pounds(Kg): 11,870(5384.2)

Maximum discharge pressure: psi(kPa)

"L" model: 1680 (11,583)

"M" model: 3350 (23097)

"H" model: 5000 (34,474)

Crankshaft extension: in.(mm)

Diameter: 4.875 (123.8)

Length long side: 11.75 (298.0)

Length short side: 5-5/8 (142.9)

Keyway (width x depth):

1 1/4 x 5/8 (32 x 16)

Maximum recommended sheave

in.(mm): 58 (1473)

Minimum recommended sheave

in.(mm): 36 (914)

For larger sizes: **Contact Factory**

Pinion shaft extension,

if gear reducer is supplied in.(mm)

For belt or chain drive:

Contact Factory

For direct drive: Diameter: 3.5 (88.9)

Length: 5-11/16 (144.5)

Keyway (width x depth):

7/8 x 7/16 (22.2 x 11.1)

Accessory gear reduction unit

2.27:1, 2.89:1, 3.25:1, 3.36:1, 3.69:1,

4.38:1, 4.84:1, 5.63:1

Oil Capacity gallons (L)

Crankcase: 8 (30.3)

Gear Reducer-varies with ratio:

3.5 to 6.5 (13.2 to 24.6)

Weight, pump only on

wood shipping skids pounds (Kg):

4486 (2035)

Gear reducer, approximate pounds (Kg):

1100 (499)

Pump Model	Flange Connections		Dimensions in inches (mm)					
	Discharge Connection Sizes	Suction Connection Sizes	A	B	C	D	E	F
200T-5L	3 (76.2) API-2000 RJ	6 (152.4) ANSI-150 FF	5 11/16	7 5/8	27 3/4	48 3/4	65 3/4	23
200T-5M	2 (50.8) API-5000 RJ	4 (101.6) ANSI-150 FF	4 3/4	6 1/2	26 1/2	48 3/8	64 7/8	25 5/16
200T-5H	2 (50.8) ANSI-2500 RJ	3 (76.2) API-2000 RJ	4 3/4	6 1/2	26 1/2	48 3/8	64 1/4	25 5/16

200T-5 Triplex Plunger Pump

Performance Data

PUMP	English Units					100 RPM		200 RPM		250 RPM		300 RPM		350 RPM		400 RPM	
	Plunger Dia. In.	Plunger Area Sq. In.	BPD per RPM	GPM per RPM	Max. Press. PSI	BPD	GPM	BPD	GPM	BPD	GPM	BPD	GPM	BPD	GPM	BPD	GPM
200T-5L	4.000	12.5664	27.9770	0.8160	945	2798	81.6	5596	163.2	6995	204.0	8394	244.8	9792	285.6	11191*	326*
	3.750	11.0447	24.5892	0.7172	1075	2459	71.7	4918	143.4	6148	179.3	7377	215.2	8607	251.0	9836	286.9
	3.500	9.6211	21.4199	0.6247	1234	2142	62.5	4284	124.9	5355	156.2	6426	187.4	7497	218.7	8568	249.9
	3.250	8.2958	18.4692	0.5387	1431	1847	53.9	3694	107.7	4618	134.7	5541	161.6	6465	188.5	7388	215.5
	3.000	7.0686	15.7371	0.4590	1680	1574	45.9	3148	91.8	3935	114.7	4722	137.7	5508	160.6	6295	183.6
200T-5M	2.750	5.9396	13.2235	0.3857	1998	1323	38.6	2645	77.1	3306	96.4	3968	115.7	4629	135.0	5290	154.3
	2.625	5.4119	12.0487	0.3514	2193	1205	35.1	2410	70.3	3013	87.9	3615	105.4	4218	123.0	4820	140.6
	2.500	4.9087	10.9285	0.3187	2418	1093	31.9	2186	63.7	2733	79.7	3279	95.6	3825	111.6	4372	127.5
	2.375	4.4301	9.8630	0.2877	2679	987	28.8	1973	57.5	2466	71.9	2959	86.3	3453	100.7	3946	115.1
	2.250	3.9761	8.8521	0.2582	2985	886	25.8	1771	51.6	2214	64.5	2656	77.5	3099	90.4	3541	103.3
200T-5H	2.125	3.5466	7.8959	0.2303	3350	790	23.0	1580	46.1	1974	57.6	2369	69.1	2764	80.6	3159	92.1
	2.000	3.1416	6.9943	0.2040	3778	700	20.4	1399	40.8	1749	51.0	2099	61.2	2448	71.4	2798	81.6
	1.875	2.7612	6.1473	0.1793	4299	615	17.9	1230	35.9	1537	44.8	1845	53.8	2152	62.8	2459	71.7
	1.750	2.4053	5.3550	0.1562	4935	536	15.6	1071	31.2	1339	39.0	1607	46.9	1875	54.7	2142	62.5
	1.375	1.4849	3.3059	0.0964	5000	331	9.6	662	19.3	827	24.1	992	28.9	1158	33.7	1323	38.6
	1.250	1.2272	2.7321	0.0797	5000	274	8.0	547	15.9	684	19.9	820	23.9	957	27.9	1093	31.9
Brake Horsepower Required						50		100		125		150		175		200	

PUMP	Metric Units					100 RPM		200 RPM		250 RPM		300 RPM		350 RPM		400 RPM	
	Plunger Dia. mm	Plunger Area cm ²	M ³ /Hr per RPM	L/Sec. per RPM	Max. Press. kPa	M ³ /Hr	L/Sec.	M ³ /Hr	L/Sec.	M ³ /Hr	L/Sec.	M ³ /Hr	L/Sec.	M ³ /Hr	L/Sec.	M ³ /Hr	L/Sec.
200T-5L	102	81.073	0.1853	0.0515	6513	18.5	5.1	37.1	10.3	46.3	12.9	55.6	15.4	64.9	18.0	74.1*	20.6*
	95	71.256	0.1629	0.0452	7410	16.3	4.5	32.6	9.0	40.7	11.3	48.9	13.6	57.0	15.8	65.1	18.1
	89	62.072	0.1419	0.0394	8506	14.2	3.9	28.4	7.9	35.5	9.9	42.6	11.8	49.7	13.8	56.8	15.8
	83	53.521	0.1223	0.0340	9865	12.2	3.4	24.5	6.8	30.6	8.5	36.7	10.2	42.8	11.9	48.9	13.6
	76	45.604	0.1042	0.0290	11583	10.4	2.9	20.8	5.8	26.1	7.2	31.3	8.7	36.5	10.1	41.7	11.6
200T-5M	70	38.320	0.0876	0.0243	13779	8.8	2.4	17.5	4.9	21.9	6.1	26.3	7.3	30.7	8.5	35.0	9.7
	67	34.915	0.0798	0.0222	15123	8.0	2.2	16.0	4.4	20.0	5.5	23.9	6.7	27.9	7.8	31.9	8.9
	64	31.669	0.0724	0.0201	16673	7.2	2.0	14.5	4.0	18.1	5.0	21.7	6.0	25.3	7.0	29.0	8.0
	60	28.581	0.0653	0.0181	18474	6.5	1.8	13.1	3.6	16.3	4.5	19.6	5.4	22.9	6.4	26.1	7.3
	57	25.652	0.0586	0.0163	20583	5.9	1.6	11.7	3.3	14.7	4.1	17.6	4.9	20.5	5.7	23.5	6.5
200T-5H	54	22.881	0.0523	0.0145	23097	5.2	1.5	10.5	2.9	13.1	3.6	15.7	4.4	18.3	5.1	20.9	5.8
	51	20.268	0.0463	0.0129	26051	4.6	1.3	9.3	2.6	11.6	3.2	13.9	3.9	16.2	4.5	18.5	5.1
	48	17.814	0.0407	0.0113	29640	4.1	1.1	8.1	2.3	10.2	2.8	12.2	3.4	14.3	4.0	16.3	4.5
	44	15.518	0.0355	0.0099	34026	3.5	1.0	7.1	2.0	8.9	2.5	10.6	3.0	12.4	3.4	14.2	3.9
	35	9.580	0.0219	0.0061	34474	2.2	0.6	4.4	1.2	5.5	1.5	6.6	1.8	7.7	2.1	8.8	2.4
	32	7.917	0.0181	0.0050	34474	1.8	0.5	3.6	1.0	4.5	1.3	5.4	1.5	6.3	1.8	7.2	2.0
Kilowatts Required						37		75		93		112		130		149	

Volumetric Rate is based on 100% Volumetric Efficiency. Brake Horsepower/Kilowatts Required is based on 90% Mechanical Efficiency. For Operation below 100 RPM, an auxiliary lubrication system is required. Not all plunger sizes are shown. Contact National-Oilwell for additional information. Spherical Valves must be installed when the pump is fitted with 4.0" (102mm) plungers.

The information and data on this sheet is accurate to the best of our knowledge and belief, but are intended for general information only. Applications suggested for the materials are described only to help readers make their own evaluations and decisions, and are neither guarantees nor to be construed as express or implied warranties of suitability for these or other applications. National Oilwell makes no warranty either express or implied beyond that stipulated in National Oilwell Standard Terms and Conditions of Sale.

Accessories

Rotating Right offers a full line of accessories to ensure long trouble free and safe operation of your multiplex pumps.

Accessories Include:

- Pulsation Dampeners - Suction & Discharge
- Vibration Shock Switches
- Liquid Level Gauges & Switches
- Pressure Safety Valves
- Plunger Lubricators
- Fire Safety Valves
- High Discharge Pressure Switch
- Condensate Drain
- N.A.C.E. Valving
- Lubricator Level Controller
- API Valves
- Drive Options



Expendables



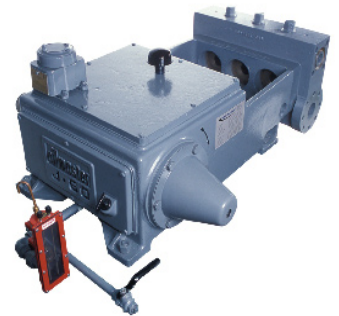
With our worldwide buying power Rotating Right is well equipped to provide a wide range of replacement parts & expendables for virtually all multiplex plunger pumps regardless of make or model.

Our expendables inventory includes plungers, packing, brass, valves, bearings, crankshafts, connecting rods and seals.



Repair & Overhauls

Rotating Right service technicians follow strict quality control procedures for every pump repair and overhaul. The use of consistent and reliable re-manufacturing techniques ensure your equipment is returned to you in "Like New" condition.



Head Office:
6120 Davies Road
Edmonton, AB
T6E 4M9

Phone: (780) 485-2010 • Toll Free: (866) 707-7867
Fax: (780) 485-1938
• Calgary • Drayton Valley • Lloydminster
www.rotatingright.com