

ROTATING RIGHT

MODEL 430T-7 SINGLE ACTING TRIPLEX PUMP



430T-7

A 430 horsepower 7" stroke horizontal triplex single acting plunger pump. Available in nickel-aluminum-bronze fluid end material at pump speeds up to 300 RPM.

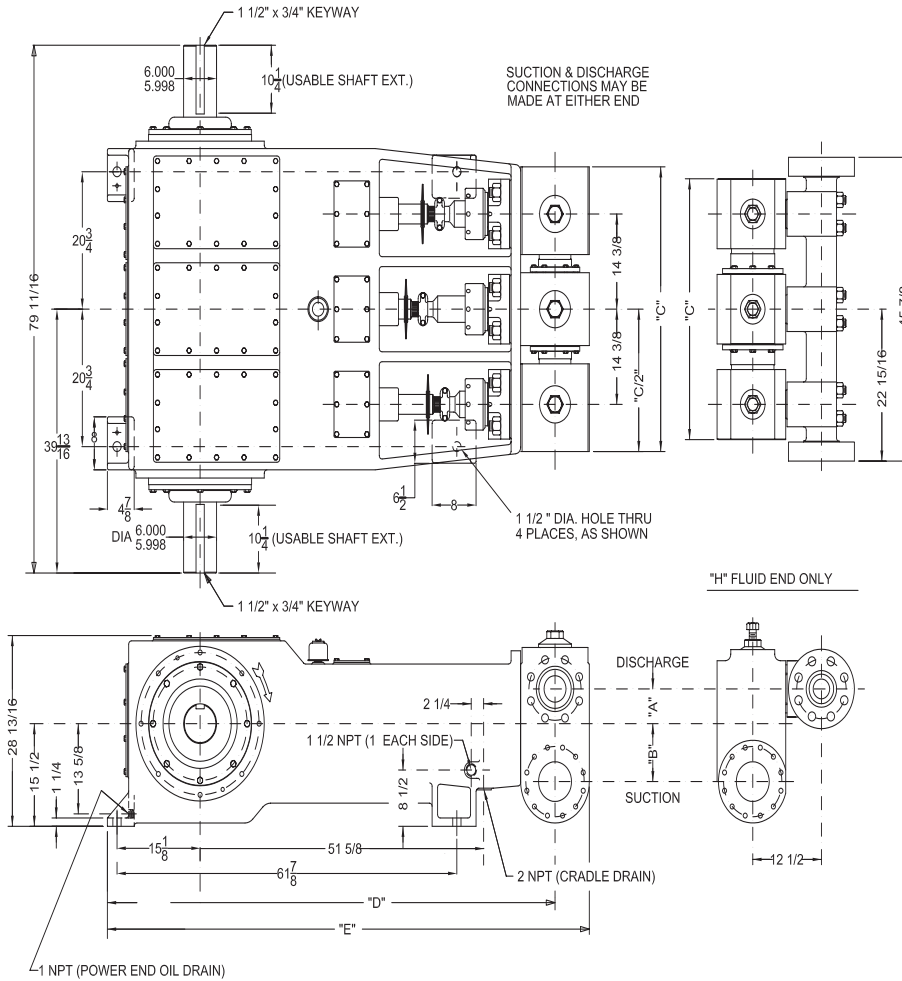
Power End Features:

- Heat Treated Ductile Iron Power Frame
- Heavy-Duty, Tapered Roller Crankshaft Bearings
- Precision Type, Aluminum Alloy Crankpin Bearings
- Ductile Iron Connecting Rods
- Alloy Steel Crosshead Pins
- Alloy Steel Crankshaft with ground journals and polished throws
- Bronze Bearing Crosshead Pin Bushings
- Cast Iron Crossheads with upper/lower oil Grooves
- Replaceable Stainless Steel Intermediate Rods
- Internal Pressure Lubrication System
- Rated rod load is 10500 lbs.

Fluid End Features:

- 17-4 Stainless Steel or Nickel Aluminum Bronze Steel Stuffing Boxes (includes nuts)
- Plungers-Solid Ceramic or Tungsten Carbide coated
- General Service, Molded Lip ,or Aramid Fiber Plunger Packing
- Spherical Suction and Discharge Valves
- Valve Seat & Valve Body: Nitronic 50
- Spring: Inconel
- Cage: 316L Stainless Steel
- Severe duty valves with inserts available

430T-7 Triplex Plunger Pump



Specifications

Pump Size

maximum plunger size x stroke length, in.(mm):
5 x 7 (127 x 178)

Rated bhp at 300 rpm (kw): 433 (323)

Rated plunger load, pounds(Kg): 24500(6738)

Maximum discharge pressure: psi (kPa)

"L" model: 1550 (10,687)

"M" model: 3150 (21,719)

"H" model: 5000 (34,474)

Crankshaft extension: in.(mm)

Diameter: 6 (152.4)

Length long side: 10 1/4 (260.4)

Length short side: 10 1/4 (260.4)

Keyway (width x depth):

1 1/2 x 3/4 (38.1 x 19.0)

Maximum recommended sheave

in.(mm): 58 (1473)

Minimum recommended sheave

in.(mm): 36 (914)

For larger sizes: **Contact Factory**

Oil Capacity, gallons (L)

Crankcase: 22 (83.6)

Weight, pump only on

wood shipping skids, pounds (Kg):

10,500 (4763)

Pump Model	Flange Connections		Dimensions in inches (mm)				
	Discharge Connection Sizes	Suction Connection Sizes	A	B	C	D	E
430T-5L	6 (152.4) API 2000 RJ	10 (254) ANSI 150 FF	10 1/4	10 3/4	47 3/4	65 3/8	90 1/4
430T-5M	4 (101.6) ANSI 1500 RJ	6 (152.4) ANSI 300 FF	5 1/4	8 3/4	43	64 5/8	87 3/4
430T-5H	3 (76.2) ANSI 2500 RJ	6 (152.40) ANSI 300 FF	5 1/4	8 3/4	39 3/8	64 7/8	100 1/4

430T-7 Triplex Plunger Pump

Performance Data

PUMP	English Units					100 RPM		150 RPM		200 RPM		250 RPM		275 RPM		300 RPM	
	Plunger Dia. In.	Plunger Area Sq. In.	BPD per RPM	GPM per RPM	Max. Press. PSI	BPD	GPM	BPD	GPM	BPD	GPM	BPD	GPM	BPD	GPM	BPD	GPM
430T-7L	5.000	19.6349	61.1998	1.7850	1248	6120	178.5	9180	267.7	12240	357.0	15300	446.2	16830	490.9	18360	535.5
	4.750	17.7205	55.2328	1.6110	1383	5524	161.1	8285	241.6	11047	322.2	13809	402.7	15190	443.0	16570	483.3
	4.500	15.9043	49.5718	1.4458	1540	4958	144.6	7436	216.9	9915	289.2	12393	361.5	13633	397.6	14872	433.8
	4.250	14.1862	44.2168	1.2897	1550	4422	129.0	6633	193.4	8844	257.9	11055	322.4	12160	354.7	13266	386.9
	4.000	12.5664	39.1679	1.1424	1550	3917	114.2	5876	171.4	7834	228.5	9792	285.6	10772	314.2	11751	342.7
430T-7M	3.750	11.0447	34.4249	1.0041	2218	3443	100.4	5164	150.6	6885	200.8	8607	251.0	9467	276.1	10328	301.2
	3.500	9.6211	29.9879	0.8746	2546	2999	87.5	4499	131.2	5998	174.9	7497	218.7	8247	240.5	8997	262.4
	3.250	8.2958	25.8569	0.7542	2953	2586	75.4	3879	113.1	5172	150.8	6465	188.5	7111	207.4	7758	226.2
	3.000	7.0686	22.0319	0.6426	3150	2204	64.3	3305	96.4	4407	128.5	5508	160.6	6059	176.7	6610	192.8
430T-7H	3.000	7.0686	22.0319	0.6426	3466	2204	64.3	3305	96.4	4407	128.5	5508	160.6	6059	176.7	6610	192.8
	2.750	5.9396	18.5129	0.5400	4125	1852	54.0	2777	81.0	3703	108.0	4629	135.0	5092	148.5	5554	162.0
	2.500	4.9087	15.2999	0.4462	4991	1530	44.6	2295	66.9	3060	89.2	3825	111.6	4208	122.7	4590	133.9
	2.375	4.4301	13.8082	0.4027	5000	1381	40.3	2072	60.4	2762	80.5	3453	100.7	3798	110.8	4143	120.8
Brake Horsepower Required						145		217		289		361		397		433	

PUMP	Metric Units					100 RPM		150 RPM		200 RPM		250 RPM		275 RPM		300 RPM	
	Plunger Dia. mm	Plunger Area cm ²	M ³ /Hr per RPM	L/Sec. per RPM	Max. Press. kPa	M ³ /Hr	L/Sec.	M ³ /Hr	L/Sec.	M ³ /Hr	L/Sec.	M ³ /Hr	L/Sec.	M ³ /Hr	L/Sec.	M ³ /Hr	L/Sec.
430T-7L	127	126.677	0.4054	0.1126	8603	40.5	11.3	60.8	16.9	81.1	22.5	101.3	28.2	111.5	31.0	121.6	33.8
	121	114.326	0.3658	0.1016	9533	36.6	10.2	54.9	15.2	73.2	20.3	91.5	25.4	100.6	27.9	109.8	30.5
	114	102.608	0.3284	0.0912	10621	32.8	9.1	49.3	13.7	65.7	18.2	82.1	22.8	90.3	25.1	98.5	27.4
	108	91.524	0.2929	0.0814	10687	29.3	8.1	43.9	12.2	58.6	16.3	73.2	20.3	80.5	22.4	87.9	24.4
	102	81.073	0.2594	0.0721	10687	25.9	7.2	38.9	10.8	51.9	14.4	64.9	18.0	71.3	19.8	77.8	21.6
430T-7M	95	71.256	0.2280	0.0633	15295	22.8	6.3	34.2	9.5	45.6	12.7	57.0	15.8	62.7	17.4	68.4	19.0
	89	62.072	0.1986	0.0552	17557	19.9	5.5	29.8	8.3	39.7	11.0	49.7	13.8	54.6	15.2	59.6	16.6
	83	53.521	0.1713	0.0476	20363	17.1	4.8	25.7	7.1	34.3	9.5	42.8	11.9	47.1	13.1	51.4	14.3
	76	45.604	0.1459	0.0405	21719	14.6	4.1	21.9	6.1	29.2	8.1	36.5	10.1	40.1	11.1	43.8	12.2
430T-7H	76	45.604	0.1459	0.0405	23898	14.6	4.1	21.9	6.1	29.2	8.1	36.5	10.1	40.1	11.1	43.8	12.2
	70	38.320	0.1226	0.0341	28440	12.3	3.4	18.4	5.1	24.5	6.8	30.7	8.5	33.7	9.4	36.8	10.2
	64	31.669	0.1013	0.0282	34413	10.1	2.8	15.2	4.2	20.3	5.6	25.3	7.0	27.9	7.7	30.4	8.4
	60	28.581	0.0915	0.0254	34474	9.1	2.5	13.7	3.8	18.3	5.1	22.9	6.4	25.2	7.0	27.4	7.6
Kilowatts Required						108		162		216		269		296		323	

Volumetric Rate is based on 100% Volumetric Efficiency. Brake Horsepower/Kilowatts Required is based on 90% Mechanical Efficiency. For Operation below 100 RPM, an auxiliary lubrication system is required. Not all plunger sizes are shown. Contact National-Oilwell for additional information.

The information and data on this sheet is accurate to the best of our knowledge and belief, but are intended for general information only. Applications suggested for the materials are described only to help readers make their own evaluations and decisions, and are neither guarantees nor to be construed as express or implied warranties of suitability for these or other applications. National Oilwell makes no warranty either express or implied beyond that stipulated in National Oilwell Standard Terms and Conditions of Sale.

Accessories

Rotating Right offers a full line of accessories to ensure long trouble free and safe operation of your multiplex pumps.

Accessories Include:

- Pulsation Dampeners - Suction & Discharge
- Vibration Shock Switches
- Liquid Level Gauges & Switches
- Pressure Safety Valves
- Plunger Lubricators
- Fire Safety Valves
- High Discharge Pressure Switch
- Condensate Drain
- N.A.C.E. Valving
- Lubricator Level Controller
- API Valves
- Drive Options



Expendables



With our worldwide buying power Rotating Right is well equipped to provide a wide range of replacement parts & expendables for virtually all multiplex plunger pumps regardless of make or model.

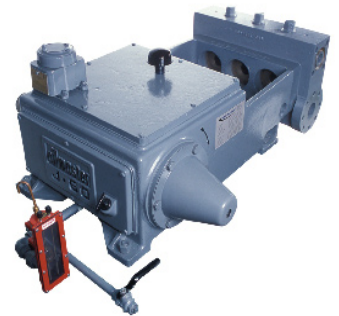


Our expendables inventory includes plungers, packing, brass, valves, bearings, crankshafts, connecting rods and seals.



Repair & Overhauls

Rotating Right service technicians follow strict quality control procedures for every pump repair and overhaul. The use of consistent and reliable re-manufacturing techniques ensure your equipment is returned to you in "Like New" condition.



Head Office:
6120 Davies Road
Edmonton, AB
T6E 4M9

Phone: (780) 485-2010 • Toll Free: (866) 707-7867
Fax: (780) 485-1938
• Calgary • Drayton Valley • Lloydminster
www.rotatingright.com