

ROTATING RIGHT

MODEL 625Q-7 SINGLE ACTING QUINTUPLEX PUMP



625Q-7

A 625 horsepower 7" stroke horizontal quintuplex single acting plunger pump. Available in nickel-aluminum-bronze fluid end material at pump speeds up to 286 RPM.

Power End Features

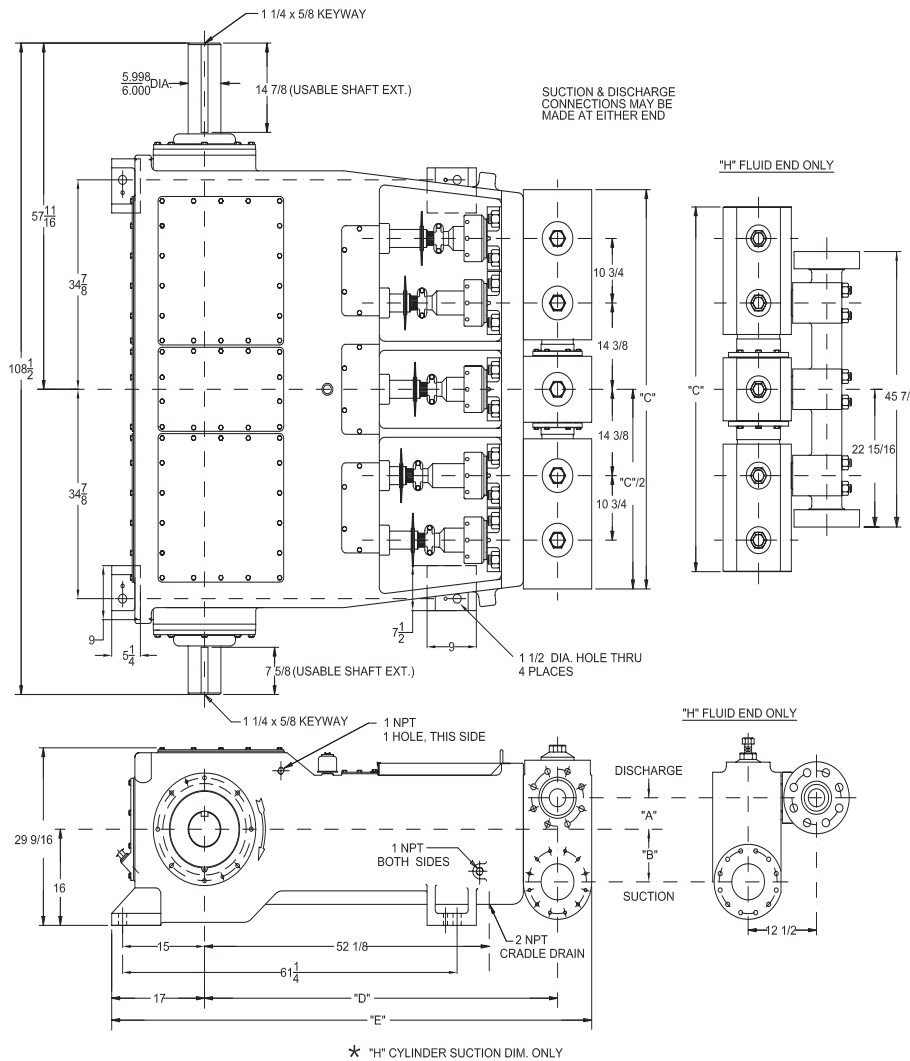
- Ductile iron power frame
- Bronze bearing crosshead pin bushings
- Heavy-duty, tapered roller crankshaft bearings
- Ductile Iron connecting rods
- Alloy steel crankshaft with ground journals and polished throws
- Alloy steel crosshead pins
- Cast iron crossheads with upper/lower oil grooves
- Replaceable Stainless Steel intermediate rods
- Flooded sump, splash distribution lubrication
- Rated rod load is 22200 lbs.

Fluid End Features

- Bolt on Valve covers
- 17-4 Stainless Steel or Nickel Aluminum Bronze Steel stuffing boxes (Includes nuts)
- General Service, Molded Lip or Aramid Fiber plunger packing
- Plungers-Solid Ceramic or Tungsten Carbide coated
- Spherical Suction and Discharge Valves
- Valve Seat & Valve Body: Nitronic 50
- Spring: Inconel
- Cage: 316L Stainless Steel
- Severe duty valves with inserts available

625Q-7 Quintuplex Plunger Pump

Specifications



Pump Size:

maximum plunger size x stroke length, in. (mm):
5 x 7 (127 x 178)

Rated bhp at 286 rpm (kw): 625 (466)

Rated plunger load, pounds (Kg): 22,200 (10,070)

Maximum discharge pressure: psi (kPa)

"L" model: 1550 (10,687)

"M" model: 3150 (21,719)

"H" model: 5000 (34,474)

Crankshaft extension: in. (mm)

Diameter: 6 (152.4)

Length long side: 14 7/8 (378)

Length short side: 7 5/8 (194)

Keyway (width x depth):

1 1/4 x 5/8 (31.8 x 15.9)

Oil Capacity, gallons (L): 33 1/2 (127)

Weight, pump only on

wood shipping skids, pounds (Kg): 17166 (7487)

Weight varies with pump model

Pump Model	Flange Connections		Dimensions in inches (mm)				
	Discharge Connection Sizes	Suction Connection Sizes	A	B	C	D	E
625Q-7L	6 (152.4) API 2000 RJ	10 (254) ANSI 150 FF	10 1/4	10 3/4	69 1/4	65 3/8	90 3/8
625Q-7M	4 (101.6) ANSI 1500 RJ	6 (152.4) ANSI 300 FF	5 1/4	8 3/4	66 1/2	64 5/8	87 7/8
625Q-7H	3 (76.2) ANSI 2500 RJ	6 (152.4) ANSI 300 FF	5 1/4	8 3/4	60 3/4	64 7/8	100 3/8

625Q-7 Quintuplex Plunger Pump

Performance Data

PUMP	English Units					100 RPM		150 RPM		200 RPM		250 RPM		275 RPM		286 RPM	
	Plunger Dia. In.	Plunger Area Sq. In.	BPD per RPM	GPM per RPM	Max. Press. PSI	BPD	GPM	BPD	GPM	BPD	GPM	BPD	GPM	BPD	GPM	BPD	GPM
625Q-7L	5.000	19.6349	102.000	2.9750	1131	10200	297.5	15300	446.2	20400	595.0	25500	743.7	28050	818.1	29172	850.8
	4.750	17.7205	92.055	2.6849	1253	9206	268.5	13809	402.7	18411	537.0	23014	671.2	25316	738.4	26328	767.9
	4.500	15.9043	82.620	2.4097	1396	8262	241.0	12393	361.5	16524	481.9	20655	602.4	22721	662.7	23630	689.2
	4.250	14.1862	73.695	2.1494	1550	7370	214.9	11055	322.4	14739	429.9	18424	537.4	20267	591.1	21077	614.7
625Q-7M	4.000	12.5664	65.280	1.9040	1767	6528	190.4	9792	285.6	13056	380.8	16320	476.0	17952	523.6	18671	544.5
	3.750	11.0447	57.375	1.6734	2010	5738	167.3	8607	251.0	11475	334.7	14344	418.4	15779	460.2	16410	478.6
	3.500	9.6211	49.980	1.4577	2307	4998	145.8	7497	218.7	9996	291.5	12495	364.4	13745	400.9	14295	416.9
	3.250	8.2958	43.095	1.2569	2676	4310	125.7	6465	188.5	8619	251.4	10774	314.2	11852	345.7	12326	359.5
625Q-7H	3.000	7.0686	36.720	1.0710	3150	3672	107.1	5508	160.6	7344	214.2	9180	267.7	10098	294.5	10502	306.3
	2.750	5.9396	30.855	0.8999	3738	3086	90.0	4629	135.0	6171	180.0	7714	225.0	8486	247.5	8825	257.4
	2.500	4.9087	25.500	0.7437	4523	2550	74.4	3825	111.6	5100	148.7	6375	185.9	7013	204.5	7293	212.7
	2.375	4.4301	23.014	0.6712	5000	2302	67.1	3453	100.7	4603	134.2	5754	167.8	6329	184.6	6582	192.0
	Brake Horsepower Required						219		328		437		545		600		625

PUMP	Metric Units					100 RPM		150 RPM		200 RPM		250 RPM		275 RPM		286 RPM	
	Plunger Dia. mm	Plunger Area cm ²	M ³ /Hr per RPM	L/Sec. per RPM	Max. Press. kPa	M ³ /Hr	L/Sec.	M ³ /Hr	L/Sec.	M ³ /Hr	L/Sec.	M ³ /Hr	L/Sec.	M ³ /Hr	L/Sec.	M ³ /Hr	L/Sec.
625Q-7L	127	126.677	0.6756	0.1877	7796	67.6	18.8	101.3	28.2	135.1	37.5	168.9	46.9	185.8	51.6	193.2	53.7
	121	114.326	0.6097	0.1694	8638	61.0	16.9	91.5	25.4	121.9	33.9	152.4	42.3	167.7	46.6	174.4	48.4
	114	102.608	0.5473	0.1520	9624	54.7	15.2	82.1	22.8	109.5	30.4	136.8	38.0	150.5	41.8	156.5	43.5
	108	91.524	0.4881	0.1356	10687	48.8	13.6	73.2	20.3	97.6	27.1	122.0	33.9	134.2	37.3	139.6	38.8
625Q-7M	102	81.073	0.4324	0.1201	12181	43.2	12.0	64.9	18.0	86.5	24.0	108.1	30.0	118.9	33.0	123.7	34.4
	95	71.256	0.3800	0.1056	13859	38.0	10.6	57.0	15.8	76.0	21.1	95.0	26.4	104.5	29.0	108.7	30.2
	89	62.072	0.3311	0.0920	15909	33.1	9.2	49.7	13.8	66.2	18.4	82.8	23.0	91.0	25.3	94.7	26.3
	83	53.521	0.2854	0.0793	18451	28.5	7.9	42.8	11.9	57.1	15.9	71.4	19.8	78.5	21.8	81.6	22.7
625Q-7H	76	45.604	0.2432	0.0676	21719	24.3	6.8	36.5	10.1	48.6	13.5	60.8	16.9	66.9	18.6	69.6	19.3
	70	38.320	0.2044	0.0568	25770	20.4	5.7	30.7	8.5	40.9	11.4	51.1	14.2	56.2	15.6	58.5	16.2
	64	31.669	0.1689	0.0469	31182	16.9	4.7	25.3	7.0	33.8	9.4	42.2	11.7	46.4	12.9	48.3	13.4
	60	28.581	0.1524	0.0423	34474	15.2	4.2	22.9	6.4	30.5	8.5	38.1	10.6	41.9	11.6	43.6	12.1
	Kilowatts Required						163		245		326		406		447		466

Volumetric Rate is based on 100% Volumetric Efficiency. Brake Horsepower/Kilowatts Required is based on 90% Mechanical Efficiency. Not all plunger sizes are shown. Contact National-Oilwell for additional information. For Operation below 100 RPM, an auxiliary lubrication system is required.

The information and data on this sheet is accurate to the best of our knowledge and belief, but are intended for general information only. Applications suggested for the materials are described only to help readers make their own evaluations and decisions, and are neither guarantees nor to be construed as express or implied warranties of suitability for these or other applications. National Oilwell makes no warranty either express or implied beyond that stipulated in National Oilwell Standard Terms and Conditions of Sale.

Accessories

Rotating Right offers a full line of accessories to ensure long trouble free and safe operation of your multiplex pumps.

Accessories Include:

- Pulsation Dampeners - Suction & Discharge
- Vibration Shock Switches
- Liquid Level Gauges & Switches
- Pressure Safety Valves
- Plunger Lubricators
- Fire Safety Valves
- High Discharge Pressure Switch
- Condensate Drain
- N.A.C.E. Valving
- Lubricator Level Controller
- API Valves
- Drive Options



Expendables



With our worldwide buying power Rotating Right is well equipped to provide a wide range of replacement parts & expendables for virtually all multiplex plunger pumps regardless of make or model.

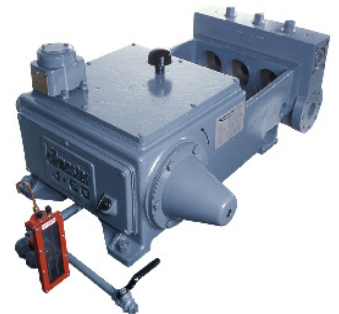


Our expendables inventory includes plungers, packing, brass, valves, bearings, crankshafts, connecting rods and seals.



Repair & Overhauls

Rotating Right service technicians follow strict quality control procedures for every pump repair and overhaul. The use of consistent and reliable re-manufacturing techniques ensure your equipment is returned to you in "Like New" condition.



Head Office:
6120 Davies Road
Edmonton, AB
T6E 4M9

Phone: (780) 485-2010 • Toll Free: (866) 707-7867
Fax: (780) 485-1938
• Calgary • Drayton Valley • Lloydminster
www.rotatingright.com